



Cowes Classics Week

Saturday 25 June to Friday 1 July 2022

Racing Monday 27 June to Friday 1 July 2022

Sailing Instructions & Information for Competitors

Organised by



Royal Yacht Squadron



RORC



Royal Thames YC



Cowes Corinthian YC

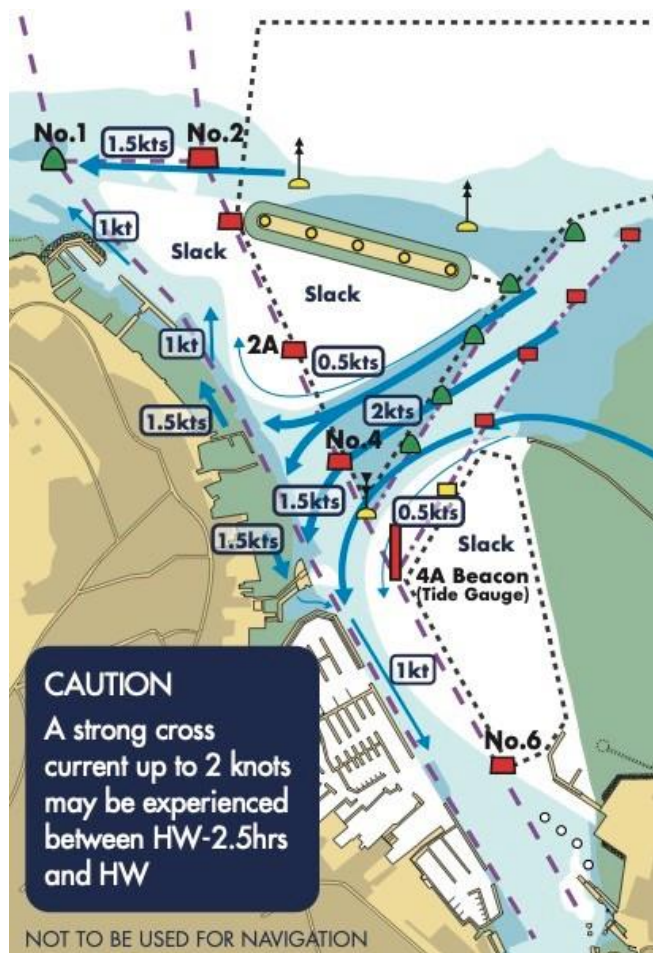
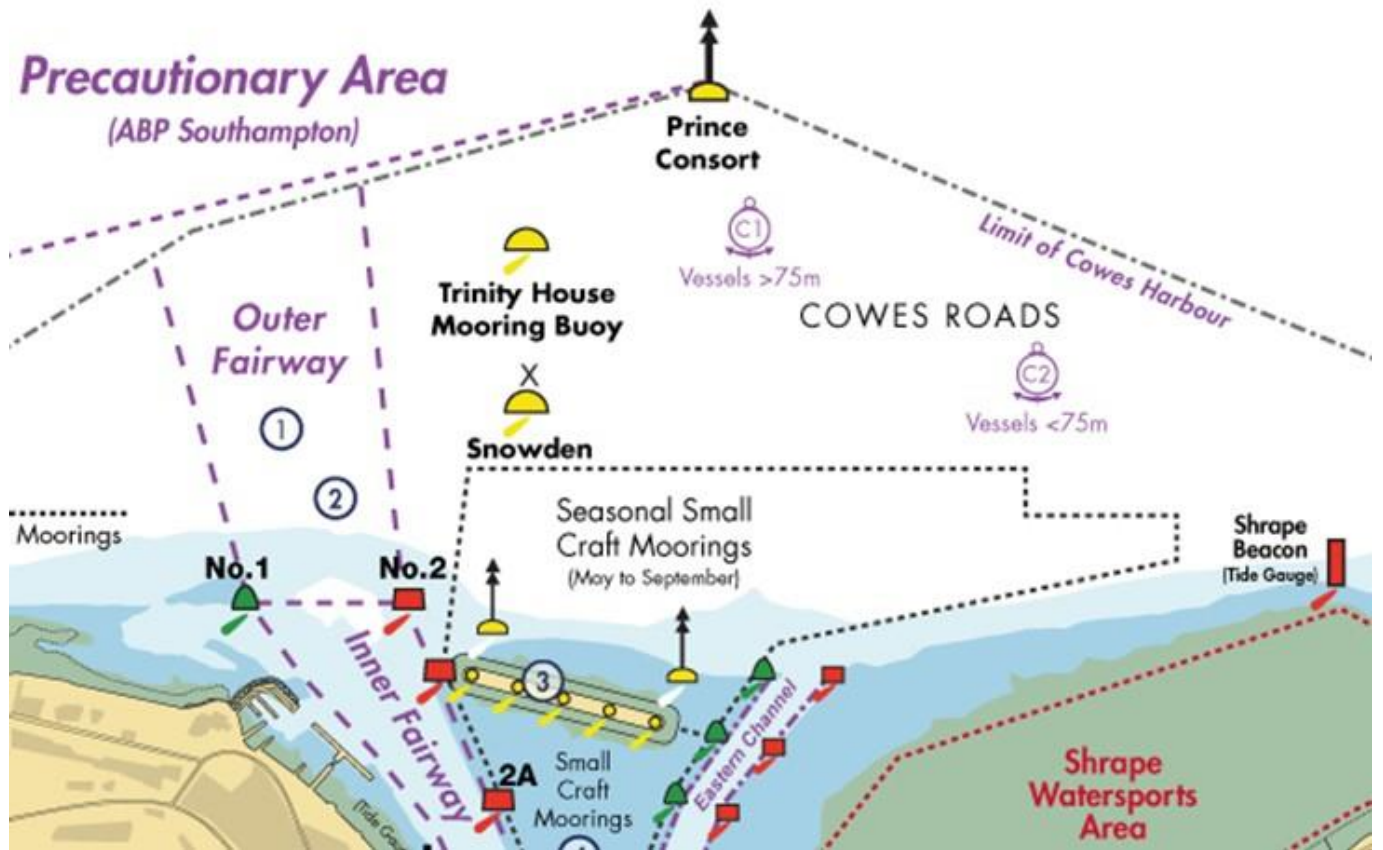


Island Sailing Club



Royal Victoria YC

Cowes Fairway and Breakwater diagram and Harbour Tidal Flows



Dayboats are advised to exit/enter the harbour via the Eastern channel when possible.

Notes to Sailing Instructions:

These Sailing Instructions (SIs) contain the following Parts:

1. General (G) - for all competitors for all racing

2. Committee Vessel (CV) – Race circuits 1, 2 & 4 (Monday to Friday)

for Classic Dayboat (including but not limited to Classic Mermaid and Vintage, Classic and Modern Dragon), National Swallow, Flying Fifteen, Daring, Squib, XOD, Victory (Wednesday only), and Seaview Mermaid (Monday and Tuesday only).

3. Shoreline (SL) – Race circuit 5 (Monday to Friday)

Racing from the Royal London Yacht Club shoreline for Classic Yacht, Folkboat, Spirit of Tradition and Old Gaffer.

Notes to Schedule of Racing (Pages 4 and 5):

- A. Warning signal times are approximate and the order may vary to suit the conditions. Listen to VHF and watch flag signals. The programme and starting order may be varied in accordance with SI G3.
- B. The class split for the Classic Yacht and other Shoreline classes, including Old Gaffers, will be notified by Friday 24 June 2022 on the official notice board.
- C. Classic Yacht, Folkboat, Spirit of Tradition and Old Gaffer starting on the Shoreline: one race is planned each day. A second race may be sailed if weather or other conditions necessitate.

All other classes: two races are planned on Monday 27 June to Thursday 30 June, and one race on Friday 1 July 2022. A third race may be sailed if weather or other conditions necessitate.

Schedule of Racing

A. Racing from the RLYC shoreline for Classic Yacht, Folkboat, Spirit of Tradition and Old Gaffer.

Race circuit 5 – SIs Part 1 & Part 3.

Racing Monday to Friday.

Briefings for Shoreline classes racing Monday to Friday

The Skippers & Safety Briefing will be held in the London Room at the Royal London Yacht Club at 1730 on Sunday 26 June 2022. An online version may be available thereafter.




Skippers should attend the Tuesday to Friday briefings 0915 at Shepards Wharf.

NOTE:

The schedule of racing for the shoreline circuit shown below in these SIs is provisional. A final schedule of racing will be published on Friday 24 June on the official notice board in conjunction with the class split.

PROVISIONAL SCHEDULE OF RACING FOR THE SHORELINE CIRCUIT

Circuit sponsor: GJW Direct  Member of the GJW Group since 1999

Class		Flag	Warning Signal	VHF
Classic Yacht Division 1	NP 1		1030	37A
Classic Yacht Division 2	NP 2		1035	37A
Spirit of Tradition	NP 7		1040	37A
Classic Yacht Division 3	NP 3		1045	37A
Folkboat	NP 4		1050	37A
Old Gaffer – Division 1	NP 5		1055	37A
Old Gaffer – Division 2	NP 6		1055	37A

B. Racing from committee vessels for all other classes

Race circuits 1, 2 & 4 – SIs Part 1 & Part 2.

Racing Monday to Friday.

Briefing for committee vessel classes racing Monday to Friday

The Skippers & Safety Briefing will be held in the London Room at the Royal London










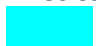




Yacht Club at 1815 on Sunday 26 June 2022. An online version may be available thereafter.

NOTE:

The schedule of racing for committee vessel circuits shown below in these SIs is provisional. A final schedule of racing will be published on Friday 24 June on the official notice board.

Classes should listen for VHF announcements on the appropriate channel, remembering to change channel if moving to a different race circuit, and watch for signals for the exact starting sequence.

PROVISIONAL SCHEDULE OF RACING FOR COMMITTEE VESSEL CIRCUITS

Class	Flag	Warning Signal	VHF
Race circuit 1 – 3Cs – pale blue 38’ fishing boat Circuit flag – Pink  Circuit sponsor: GJW Direct 			
XOD	IC W 	1030	72
Race circuit 2 – Cowes United – white 10m catamaran Circuit flag – Purple  Circuit sponsor: GJW Direct 			
National Swallow	IC B 	1030	06
Classic Dayboat & Flying Fifteen	IC R 	1040	06
	NN 6 		
Squib	NN 9 	1050	06
Race circuit 4 – Crystal Spray – white 11.2m catamaran Circuit flag – Turquoise  Circuit sponsor: GJW Direct 			
Daring	IC O 	1030	77
Seaview Mermaid (Monday & Tuesday only)	NP 9 	1040	77
Victory (Wednesday only)	IC Z 	1050	77

Sailing Instructions

Part 1 – General

All Competitors for All Racing

The notation '[NP]' in the SIs means that a boat may not protest another boat for breaking that rule. This changes RRS 60.1(a).

The notation '[DP]' in the SIs means that the penalty for a breach of that rule may, at the discretion of the protest committee, be less than disqualification.

G1 Rules

- G1.1 The event is governed by the rules as defined in *The Racing Rules of Sailing* (RRS).
- G1.2 There shall be no race unless two boats start. The race committee may at its sole discretion postpone, reschedule or abandon a scheduled race. This changes RRS 90.3(a).
- G1.3 [NP] No event document reduces or relieves the obligation of a boat to comply with the International Regulations for the Prevention of Collisions at Sea (IRPCS) or ABP Notice to Mariners [No. 08 of 2022](#).
- G1.4 [NP] Boats are required to display, from their backstay (or starboard shroud if no backstay), their class flag whilst racing.
- G1.5 Competitors participate in the regatta entirely at their own risk. See RRS 3 Decision to Race and NoR 19 Risk Statement.

G2 Equipment and Safety

- G2.1 Boats shall not carry anchors that protrude over the bow or outboards that extend beyond the transom.
- G2.2 Boats may use any method of propulsion in accordance with RRS 42.3(i) in an emergency to keep clear of a ship. Such use shall be reported to the race committee within the protest time limit.
- G2.3 If it appears to the race committee, or any appropriate authority, that a boat is failing to, or is unable to, comply with SI G6.1, G6.3, G6.4 or G6.5, it may order that boat to take a tow and the boat shall comply with that order. When taken in tow the race committee shall score the boat as retired without a hearing. This changes RRS 63.1 and A5.2.
- G2.4 [DP] Personal flotation devices, when required to be worn, shall be clearly visible to other boats and the race committee.

G3 Changes to Sailing Instructions

Any change to the SIs made ashore will be posted by 0900 on the day it will take effect, except that any change to the schedule of racing will be posted by 2000 on the day before it will take effect.

G4 Notices and Communication with Competitors

- G4.1 Notices to competitors will be posted on the official notice board.
- G4.2 The regatta office is located at the Royal London Yacht Club, The Parade, Cowes, PO31 7QS.
- G4.3 The race committee may use VHF to broadcast information such as, but not limited to, safety issues, signals made ashore, the location of the committee vessel, time checks before the first warning signal, description of courses including laid and fixed marks, sail numbers of boats recalled, or during the race if it concerns abandonment, a change of course or the time limit. In accordance with RRS 90.2(c), oral alterations to sailing instructions may be made by VHF before the warning signal.
- G4.4 [DP] The VHF channel to be used is specified in the Schedule of Racing. Boats shall keep a radio watch from 60 minutes before the first warning signal and until they return to their mooring.
- G4.5 In addition, the race committee may use WhatsApp to notify the information described in G4.3 or G4.4 above for race circuit 5, and if one or more of race circuits 1, 2 & 4 are transferred to the RLYC shoreline, (see notes on page3).
- G4.6 Neither failure by the race committee to transmit by VHF or text the information referred to in SI G4.3, G4.4 and G7.2, nor errors, omissions or delay in doing so, nor the failure by a boat to receive or hear such VHF transmissions or WhatsApp messaging, will be grounds for redress. This changes RRS 60.1 (b) and 62.1 (a).

G5 Signals Made Ashore

- G5.1 Signals made ashore will be displayed at the RLYC flagstaff for circuit 5 and at the RORC flagstaff for circuits 1, 2 and 4. Signals ashore for circuits 1, 2 and 4 will be displayed in conjunction with the coloured circuit flag shown in the Schedule of Racing.
- G5.2 Flag AP over AP with two sound signals means racing is postponed and boats are advised not to leave the harbour. The warning signal of the first class to start will be made not less than **45 minutes** after replacement of the double AP by a single AP with two sound signals. This changes RRS Race Signals.
- G5.3 For circuits 1, 2 and 4, if the coloured circuit flag is displayed over 2nd substitute with 4 sound signals, visual signals ashore will be replaced with VHF announcements on the designated circuit VHF channel shown in the Schedule of Racing.

G6 Course Restrictions and Obstructions

- G6.1 Boats shall comply with Associated British Ports Notice to Mariners [No. 08 of 2022](#): The Moving Prohibited Zone in the Precautionary Area which shall rank as an obstruction for the purposes of RRS 19 and 20. Boats shall avoid close quarters with any commercial vessel.
- G6.2 Boats shall not anchor or kedge in the Cowes harbour fairway and in the area between Stone Point and Gurnard Bay as indicated on the racing chart provided, and on Admiralty Chart 2036. Gas and water pipes, telephone and electricity cables carrying 133,000 volts lie on the sea bed.

- G6.3 Boats racing shall use all reasonable endeavours to avoid contact with navigation buoys, whether marks of the course or not. In the case of contact, whether or not leading to damage to the buoy, the circumstances of the incident and details of any damage shall be reported to the race committee within the protest time limit. RRS 31 and 44 as modified shall remain in force. If the navigation buoy has been damaged the race committee may protest the boat. If a boat is forced by the actions of another boat to collide with a navigation buoy her only remedy is to protest.
- G6.4 Boats shall keep a good look out for ferries and commercial traffic, especially in the Area of Concern shown in the Central Solent racing chart attached to these SIs.
- G6.5 Boats starting or finishing near Cowes shall keep a good look out for ferries and commercial traffic when in the vicinity of the Cowes harbour fairway as marked on Admiralty chart 2793. Rule 9 parts (b) and (d) of the IRPCS shall be complied with at all times as follows:
- (b) A sailing vessel shall not impede the passage of a vessel which can safely navigate only within a narrow channel or fairway*
 - (d) A vessel shall not cross a narrow channel or fairway if such crossing impedes the passage of a vessel which can safely navigate only within such channel or fairway. The latter vessel may use the sound signal prescribed in IRPCS Rule 34(d) if in doubt as to the intention of the crossing vessel*
- G6.6 The race committee may set courses that do not permit boats to sail rhumb line courses between marks, particularly over the central Solent Bramble Bank. This shall not be grounds for redress. This changes RRS 62.
- G6.7 Whilst racing, boats shall always pass to the north of the Cowes Breakwater.
- G6.8 Boats, whether racing, preparing to race or having finished racing and in whatever direction they are sailing, shall not sail south of a line between the two northernmost cardinal marks surrounding the Cowes Breakwater. (See charts on page 2 of these SIs.)

G7 The Start – General

- G7.1 [DP] Boats whose warning signal has not been made shall not obstruct the starting line and all other boats whose warning signal has been made.
- G7.2 Sail numbers of boats recalled under RRS 29.1 may be broadcast on VHF as soon as practical. Failure of such broadcast, or of a boat to hear it, or the order of the broadcast shall not be grounds for redress. This changes RRS 60.1 (b) and 62.1 (a).
- G7.3 A boat starting later than fifteen minutes after her starting signal will be scored DNS without a hearing. This changes RRS A5.1 and A5.2.

G8 Class Flags

See schedule on pages 4 and 5 of these SIs.

G9 Penalty System

- G9.1 For all classes except Classic Yacht, Folkboat, Spirit of Tradition and Old Gaffer, RRS 44.1 is changed so that the Two-Turns Penalty is replaced by the One-Turn Penalty. However, when she may have broken a rule of Part 2 while in the zone around a

mark, other than a starting mark, her penalty shall be a Two-Turns Penalty.

- G9.2 For Classic Yacht, Folkboat, Spirit of Tradition and Old Gaffer, the One- and Two- Turns Penalties of RRS 44.1 and 44.2 shall not apply. In accordance with RRS 44.1 and 44.3, a Scoring Penalty shall apply. When a boat in the above classes takes a Scoring Penalty, the Scoring Penalty (applied to corrected time results when relevant) shall be the score she would have received without that penalty, made worse by one place. A boat taking a Scoring Penalty shall report in person to the race office that she is taking one or more penalties and identify the boat(s) infringed against (or mark(s) touched or navigation restriction infringed) to the protest committee within her protest time limit. This report shall be on the form available at the race office.
- G9.3 The race committee may inform competitors on VHF of their disqualification under RRS 30.3 and 30.4 but failure to do so shall not constitute grounds for redress from the penalty. This changes RRS 62.
- G9.4 If a boat is identified and disqualified under RRS 30.4 and a general recall is signalled or the race is abandoned after the starting signal, the race committee may display her sail number or alternatively may broadcast her sail number on VHF before the next warning signal for that race. This changes RRS 30.4 and 62.
- G9.5 The level of penalties (other than time penalties specifically defined in this sailing instructions) for infringements of the rules shall be at the discretion of the protest committee and may be disqualification, a time penalty or no penalty. This changes RRS 64.1.

G10 Time Limit

- G10.1 Unless otherwise amended in writing or orally in accordance with SI G4.3 the race time limit is 2 hours (4 hours Classic Yacht, Folkboat, Spirit of Tradition and Old Gaffer) and the day time limit is 1800 (1500 on the last day of the regatta), whichever is the earlier.
- G10.2 The race committee may award a finishing position or DNF to any boat not finishing within 30 minutes (on corrected time if applicable) after the first boat sails the course and finishes to enable further race(s) to be sailed or racing to be concluded. For the XOD Class, the race time limit will be 20 minutes after the first boat has sailed the course and finished. This changes RRS 35 and A5.1.
- G10.3 Should no boat finish by the time limit, the result of the race may be determined from the previous time the start/finish line was crossed or the order of boats at a rounding mark or their position at the time limit. This changes RRS 35. XODs not finishing within the time limit and who are still racing at the expiry of the time limit will be scored the average of the points available to those boats still racing had such boats finished. Half points will be rounded down. This changes RRS A4.

G11 Protests and Requests for Redress

Protests and requests for redress shall be submitted on forms available from the race office and shall be delivered within 105 minutes (60 minutes on the last day of

the regatta) of the time of the last boat to finish the last race of the day in her class. Contact mobile numbers should be included on the form.

G12 Scoring, Discards & Trophies

G12.1 The scoring will be RRS Appendix A changed by the notice of race and any amendments to the notice of race and in these SIs except that a boat that Did Not Come to the Starting Area (DNC) and a boat that is Disqualified (DSQ) will be scored points for the finishing place two more than the number of boats entered in the series. This changes RRS Appendix A5.2.

G12.2 The number of races scheduled and discards for the Cowes Classics Week class trophies are as follows:

Class	Races in Series		Discards
	Max	Min	
Classic Yacht, Folkboat, Spirit of Tradition and Old Gaffer	5	3	1 discard when 5 races completed
Victory	3	2	1 discard when 3 races completed
Seaview Mermaid	6	2	1 discard when 3 races completed 2 discards if 6 races completed
All other Classes	9	4	1 discard when 6 races completed, 2 discards if 9 races completed

G12.3 Results will be posted on the official notice board www.cowesclassicsweek.org as soon as possible after racing has finished.

G12.4 Day Prizes will be awarded to the overall winners in each class for all the races completed on the relevant day, using the scoring system defined in G12.1.

G12.5 The number of races to count for the Cowes Classics Week New Helm Trophy, David Gower Bowl and the Overall Trophy, the 1792 Cup, is five. In the event that fewer than 5 races, after discard, are sailed by a class, the total score of each boat in that class will be pro-rated to the equivalent of 5 races. The Victory and Seaview Mermaid classes are not eligible to compete for the New Helm, David Gower Bowl and Overall Trophies.

G12.6 To calculate the overall winners described in G12.5, the points scored by each boat shall be multiplied by 10 and then divided by the square root of the number of boats in the class entered in the regatta, to recognise the added difficulty of winning in a large fleet. The winner will be the boat with the fewest points.

G13 Retirements

Boats shall notify retirements to the race committee at the earliest opportunity either on the designated VHF channel or, for circuits 1, 2 and 4, by hailing a race committee vessel.

G14 Official Boats

G14.1 [NP] Committee vessels will fly a circuit sponsor pennant as set out in the Schedule of Racing.

G14.2 On leaving harbour and until shortly before the first signal of each day, committee vessels and their associated RIBs will fly a coloured circuit identification flag as set out in the Schedule of Racing.

G15 Support Boats

Coaching and support boats shall remain outside the areas and extreme lay lines where boats could be racing from the time of the preparatory signal for the first class to start until all boats have finished or the race committee signals a postponement, general recall or abandonment.

Part 2 – Committee Vessel – Race Circuits 1, 2 & 4

Racing from committee vessels on Monday to Friday for Classic Dayboat, National Swallow, Flying Fifteen, Daring, Squib, XOD, Victory (Wednesday only), and Seaview Mermaid (Monday and Tuesday only).

CV1 Schedule of Racing

CV1.1 See schedule on pages 4 and 5 of these SIs and notes (page 3).

CV1.2 When more than one race is scheduled, any subsequent race might not be started in the same order as the previous race. Any change in the order will be announced on VHF.

CV2 Racing Area

CV2.1 Each committee vessel described in the Schedule of Racing will set up her course in a separate racing area, which she will broadcast repeatedly on her dedicated VHF channel commencing at least one hour before the first warning signal of the day.

CV2.2 [DP] On arrival in the race area each day, each boat shall sail past the stern of the committee vessel on starboard tack and hail her sail number until acknowledged by the race committee. At the same time or before she shall also advise the race committee of any alternative sail numbers to be used.

CV3 The Course

CV3.1 The course will be displayed from the committee vessel (alternatively it may be broadcast on the designated VHF channel) by the single code letter and a number, plus relevant symbols, shown on the attachment entitled 'Laid Courses', regardless of the colour of the letter or number. The course to be sailed and order of rounding is shown below each diagram. Leave all marks to port unless an 'S' indicates to starboard. Marks shown in brackets () will not be laid unless the designated symbol (for spreader/offset or gate), shown on the attachment 'Laid Courses', is displayed with the course code letter/number. When a (+) symbol is displayed with the course, boats shall finish on the other side of the committee vessel to the start line. The approximate compass bearing to the first mark may also be signalled or broadcast from the committee vessel.

CV3.2 Alternatively, the course may be broadcast on the designated VHF channel using identifiers from the attachments "Laid Mark Two Digit Identifiers" or 'Central Solent Course Mark Two Digit Identifiers 2022'. The approximate compass bearing to the first mark may also be broadcast on the designated VHF channel.

CV4 Marks

CV4.1 Marks will either be selected from the fixed navigation buoys or racing marks (see attachments 'Central Solent Course Mark Two Digit Identifiers 2022' and 'Central Solent Racing Chart') or be specially laid inflatable marks.

CV4.2 The laid inflatable marks for each course will be allocated with the following colours:

<i>Circuit</i>	<i>Normal Mark Colour</i>	<i>Alternative Windward/Leeward Mark Colour</i>	<i>Change Mark Colour</i>
1 – 3Cs	Orange	N/A	Black Pyramid
2 – Cowes United	Black	N/A	Orange Pyramid
4 – Crystal Spray	Yellow	Orange	Black Pyramid

CV4.3 If, **at a class start**, wind or other conditions necessitate an Alternative Windward or Leeward Mark of a different colour than the Normal Mark Colour set out in SI CV4.2, then the letter O for orange will be displayed with the course letter.

CV4.4 If the course is changed after the start in accordance with RRS 33 and SI CV6.1, the colour of the Changed Windward Mark will be as SI CV4.2.

CV5 The Start

CV5.1 The starting line is between a staff bearing an orange flag on the main committee vessel and the course side of an outer distance mark which is the nearby inflatable mark, navigation buoy or racing mark, as advised by VHF radio on the designated channel. For Circuit 1 only, the outer distance mark may be one of two laid inflatable buoys of different colour or shape, the mark to be used to be announced on VHF radio prior to the warning signal.

CV5.2 An inner distance mark may be laid near the main committee vessel. This mark may not be positioned on the starting line. If laid, boats shall pass between the inner and outer distance marks when approaching the line to start.

CV5.3 To alert boats that a starting sequence will soon begin, an orange flag will be displayed with multiple sounds five minutes before the first warning signal of a sequence.

CV6 Change of Course after the Start

CV6.1 RRS 33 is changed so that the race committee may display (or radio) the course to be sailed, in accordance with SI CV3 for the remainder of the race which may be longer or shorter. If a (#) is displayed at a rounding mark boats shall proceed directly to the **Finish Line** from that mark.

CV6.2 The position of any laid inflatable mark(s) may be adjusted by up to approximately plus or minus 10 degrees relative to the previous laid mark(s) and up to approximately 300m to windward or leeward without signalling in accordance with RRS 33(a) or (b). This changes RRS 33.

CV7 The Finish

CV7.1 The finishing line is between the staff or halyard displaying a blue flag on a committee vessel and the course side of the ODM of the start/finish line or the last mark of the course.

CV7.2 Unless notified otherwise, the finishing line for a round-the-cans course towards Cowes shall be in the vicinity of Cowes Corinthian mark (34) and shall be between

a laid inflatable mark and the nearby committee vessel which shall be branded with the logo of the sponsors, GJW Direct.

CV7.3 The race committee may finish boats if their positions are such that they will not materially change the outcome of the race, even if still within the time limit as set out in SI G10. This will be communicated to the boat(s) by VHF and/or by a race committee vessel. With the exception of the XOD class (see G10.3) their score in the race will be as per their position at the time of being advised that they have been finished.

Part 3 - Shoreline – Race Circuit 5

Racing from the Royal London Yacht Club shoreline for Classic Yacht, Folkboat, Spirit of Tradition and Old Gaffer or if Circuits 1, 2 & 4 are transferred to the RLYC shoreline (see Notes on page 3)

SL1 Schedule of Racing

SL1.1 See schedule on page 4 of these SIs and notes (page 3).

SL2 The Course

SL2.1 The course for each class will be broadcast on **VHF channel M1 (37A)** and will be from the Solent Two Digit Mark Codes 2022 (see Attachment); the broadcast will include the required side to leave each mark. The course may also be sent by WhatsApp and will include 'P' for port and 'S' for starboard as the required side to leave the mark. The absence of, delay or the failure of WhatsApp or other messages shall not be grounds for redress. This changes RRS 62.1(a).

SL3 The Start

SL3.1 The RLYC shoreline is defined as the extension of a line from a black and orange board on the RLYC clubhouse in line with a similar board on The Parade wall. The outer distance mark (ODM) is Snowden Buoy (39) except for Divisions 1 and 2, for which Classes the ODM is Prince Consort Buoy (33). The southern extremity of the starting line is No. 2 Harbour Buoy which shall be passed to the north.

SL3.2 **Direction of Start:** Prior to the first warning signal of the day a signal displayed on the RLYC flagstaff may indicate the start direction, with a green flag for a start to the west (green = Gurnard) and a red flag for a start to the east (red = Ryde).

SL3.3 Boats intending to race, once in the start line area, will be called by the race committee on VHF Channel M1 (37A), call sign "Royal London Race Control" and asked to advise their sail number. The call is to be acknowledged by the boat; this then serves to confirm that communication has been established for reasons of safety.

SL4 The Finish

SL4.1 The finishing line is between the black and orange post on the RLYC clubhouse and either Snowden or the Trinity House Buoy according to which is the designated finishing mark. Where a shortened course is signalled from the RLYC flagstaff for boats crossing the RLYC start/finish line on a lap of the course, changing RRS 32.2, the finish line will be as described in this SI SL4.1.

SL4.2 The race committee may finish boats if their positions are such that they will not materially change the outcome of the race, even if still within the time limit as set out in SI G10. This will be communicated to the boat(s) by VHF and/or by a race committee vessel. Their score in the race will be as per their position at the time of being advised that they have been finished.

Additional Documentation

The following documents are attached in encapsulated form or on waterproof paper and should be used in conjunction with the sailing instructions.

Classic Yacht classes:

- Solent Racing Charts
(see SI G6.4 and SL2.1)
- Solent Two Digit Mark Identifiers
2022
- Precautionary Area and Ships'
Tracks diagrams (see SI G6.1)

All other classes:

- Central Solent Racing Chart
(see SI G6.4 and CV4.1)
- Laid Courses
- Laid Mark Two Digit Identifiers
- Central Solent Course Mark Two Digit
Identifiers 2022

This is the end of the sailing instructions.
The following pages contain information for competitors.

Information for Competitors

Please comply with any Government Covid 19 regulations and guidelines in force at the time.

Communications

When entering, all competitors were asked to provide a mobile telephone number which could be used to contact them with information during the event. This may be a phone call from the race office or, when the same information needs to be sent to a number of boats, WhatsApp messaging may be used.

High Water – Portsmouth

Mon 27 Jun		Tue 28		Wed 29		Thu 30		Fri 1 Jul	
1140	4.2m	1210	4.4m	1250	4.3m	1320	4.4m	1400	4.4m

Royal London Yacht Club & Clubhouse

All participating sailors will become Temporary Members of the Royal London Yacht Club from Saturday 25 June to Friday 1 July inclusive.

Participating sailors and their immediate families are invited into the clubhouse each day.

Emergency Procedures Afloat

If you have a medical or other emergency afloat call Solent Coastguard on VHF Channel 16 advising the nature of the emergency, the name of the casualty and your location. You may be asked to switch to another VHF channel or a mobile telephone. When you are able to do so, inform the race committee on the appropriate VHF channel or the Regatta Office by mobile telephone. If the casualty requires treatment ashore, unless advised otherwise, you should moor on the east side of the Trinity Pontoon (outside Royal London YC) where access for an ambulance is possible.

If using mobile telephone, the Emergency Services (Fire, Ambulance, Police) can be contacted by dialling 999 or 112, but please inform the race committee if you have made this call.

Launches

Morning launches will only run from/to Trinity Landing Trinity Landing (RLYC).

After racing, launches will return to Trinity Landing and the Island Sailing Club pontoon.

0900 – 1900	Saturday	0930 – 1700	Sunday
	0830 – 1700	Monday – Friday	

In the event of a delay to the finish of racing, these launch times will be extended.

Call all launches on VHF 37A, call-sign “Classics Week Launch”,
or phone 07984 656 571 (Monday to Friday).

Competitors moored at Shepards Wharf Marina and Cowes Corinthian YC and requiring transport to/from Trinity Landing please phone the Dock Master to schedule a launch.

Please arrive in good time for morning launches to minimise your waiting time.

ABP Guide

ABP has produced a very helpful document for recreational boating. Access it [here](#).

Cowes Classics Week 2022 Onshore Programme

For information on events ashore, refer to the [socials webpage](#) online.

Useful Numbers	VHF	Telephone
Regatta Office at RLYC		01983 300 727 / 07930 414 134
Royal London Yacht Club – Club Office only		01983 299 727
Cowes Classics Week Launch Service	VHF 37A	07984 656 571
Cowes Medical Centre, Newport Road, Cowes		01983 295 251
St Mary's Hospital, Newport, A&E		999 or 01983 822 099
Regatta Secretary: Kate Palfrey		07815 019 219
Regatta Chairman & Principal Race Officer: Peter Taylor		07900 583 792
Cowes Harbour Master	VHF 69	01983 293 952

Photography



Official Charities

Autism On The Water

Autism On The Water is fully committed to raising awareness of the autistic spectrum through the sport of sailing and helping people with autism to access sailing. "Autism on the Water is delighted to have been chosen as one of the charities supported by Cowes Classics Week. It really shows the incredible support that we are receiving during our time on the Solent. We're coming with both our yachts from Scotland to promote our work on the Solent with the intent of in the future being registered within the area and providing opportunities to young people there. Being associated with the Royal London YC and Cowes Classics Week is therefore a wonderful honour and we are very grateful." said Murray MacDonald, founder of the charity.



UKSA

We are a national maritime charity, based on the Isle of Wight, with a vision to widen access to maritime training and to enhance life skills and employment in the sector. UKSA was founded in 1987 by Noel and Sylvia Lister, who wanted to use sailing and watersports to educate and enrich the lives of young people. Thirty years on, this ethos remains at the core of everything we do. UKSA offers a unique breadth of aspirational pathways – from inspiring and engaging a school child taking part in watersports for the first time to enable them to build confidence, broaden horizons and develop life skills, through to training young people looking to begin or progress in careers in the maritime industry.



Cowes Classics Week Trophies

Classic Yachts – Division 1	Danegeld Half Model
Classic Yachts – Division 2	Algernon Maudslay Trophy
Classic Yachts – Division 3	Classic Yacht Model
Daring	Metre Regatta Trophy
Classic Dayboat	Royal Singapore YC Model
Flying Fifteen	Calf Cup
Folkboat	Dr Bowns Salver
National Swallow	Aitken Challenge Cup
Old Gaffers White Fleet	Caprice Half Model
Old Gaffers Silver Fleet	Old Gaffers Model
South Coast One Design	Phoenix Challenge Trophy
S&S Classic Yachts	Barton Centenary Cup
X One Design	Haines Boatyard Trophy
Solent Grounding	Solent Grounding Trophy
Concours d’Elegance	Classic Boat Magazine Trophy
Ratsey & Lapthorne	Travellers Trophy
The Spirit of Cowes Classics Week Trophy, presented by Ratsey & Lapthorne	To be announced
Seamanship	Classic Boat Magazine Trophy
Cowes Classics Week New Helm	CCW New Helm Trophy
Youngest Average Age Crew	David Gower Bowl
No Spinnaker Division Classic Yachts 30’ LOA and over	Keeper prize
To be announced	The RLYC Anniversary Bowl
Cowes Classics Week Overall Winner	The 1792 Cup

Cowes Classics Week Race Committee

Regatta Chairman	Peter Taylor	
Principal Race Officer	Peter Taylor	
Deputy PRO	Tom Rusbridge	
Regatta Admin	Anne Taylor, Kate Palfrey	
Website & Results	Steve Vyse, Diana McNeil	
Course Race Officers	Circuit 1	Bob Milner
	Circuit 2	Rod Nicholls
	Circuit 4	Jeremy Spencer-Cooper
	Circuit 5	Derek Hodd

Race Team:		
Mary Ann Barton	Caspar Gray	Gill Smith
Rodney Barton	Elaine Haworth	Lesley Stannard
Mike Batcheler	Maggie Hodd	Tony Taylor
John Bessant	Steve Horne	Laurie Tennant
Roger Boxell	Anna Howie	Carol Thompson
Mark Butler	Geoff Hughes	Nick Tolley
Colin Caldicott	Rosemary Luck	Carol Toogood
Dawn Carritt	Tony Newberry	David Toogood
Penny Carter	Nicky Ottaway	Mike Van Baaren
Mark Cave	Gill Partington	Jenni Waite
Steve Charnock	Linda Pennington	John Waterman
Alec Cokes	Mike Peskett	Mark Wayte-Smith
John Dallimore	Damian Phillips	Anthea Weekes
Geoff Dorrell	Deborah Phillips	Stephen Weekes
Neil Duncan	John Pratt	Liam Weighill
Richard Dunkerley	Terry Pring	Mike Weighill
Keith Evans	Steve Sheridan	Rhyddian Williams
		Jenny Woods

Regatta Support:	Barry Elliot	
Regatta Office:	Lisa Marsden	Sue Fox
	Sarah Richardson	Annette Gibb

Protest Committee	Tricia Neri (Chair)	Penny Carter
	Tullio Giraldi (Rules Adviser)	Brian Smith
		Richard Thompson
PC Secretary:	Wendy Peskett	

Photographer:	Tim Jeffreys	
----------------------	--------------	--

We are extremely grateful to all our sponsors and supporters
for their contribution to Cowes Classics Week 2022

PROUD TO SPONSOR COWES CLASSICS WEEK

evelyn
PARTNERS

 **GJW Direct**
Marine Insurance Since 1826

FAWLEY
WATERSIDE


RED FUNNEL

MERMAID
SMALL **GIN** BATCH
ISLE OF WIGHT DISTILLERY

Classic Boat
THE MAGAZINE FOR THE WORLD'S MOST BEAUTIFUL BOATS

 **COWES HARBOUR
COMMISSION**

KENDALLS FINE ART


RATSEY & LAPHORN
COWES
ENGLAND
ESTD 1790

Bodegas
Luis Páramas

VILLABUENA
RIOJA ALAVESA


worldleisurewear.com

Clare Hallow's Est 1867
**YACHT AND
MOTOR LAUNCH BUILDER**

**Dates for Cowes Classics Week 2023
will be announced at the Prize-giving**